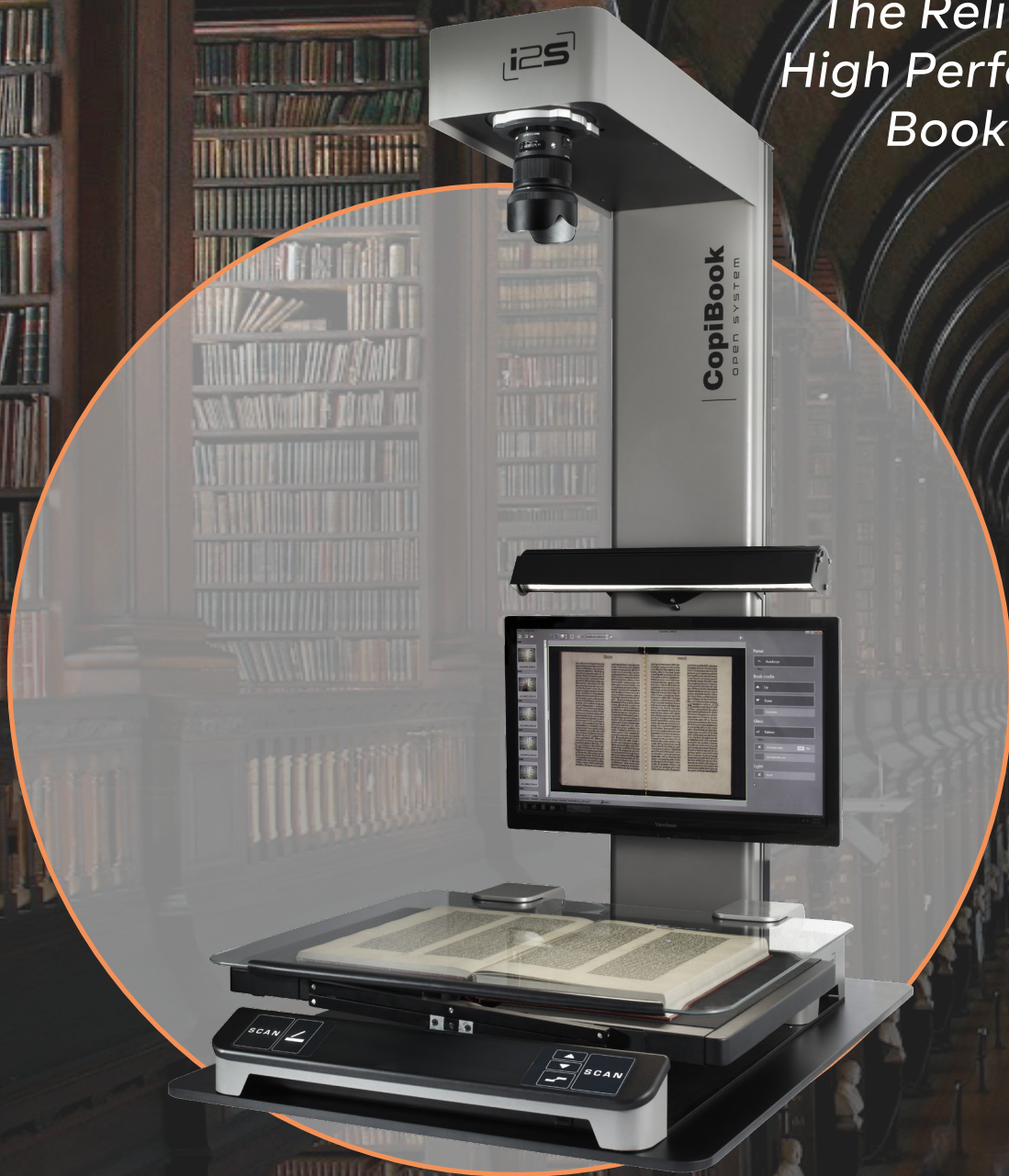


# COPIBOOK OS A2+

*The Reliable and  
High Performance  
Book Scanner*



EXCELLENCE AT YOUR FINGERTIPS

**i2S**  
be visionary

# CopiBook Open System A2+

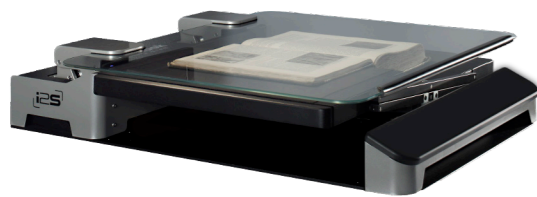
## The Reliable, High-Performance Book Scanner

### SCANNERS WITH MATRIX SENSORS

#### MODULAR BOOK CRADLE

Several choices of book cradle:

##### ADVANCED BOOK CRADLE



Manual glass and independent trays

→ Risk-free scanning

Ability to scan without a book cradle

→ Scanning up to A2+

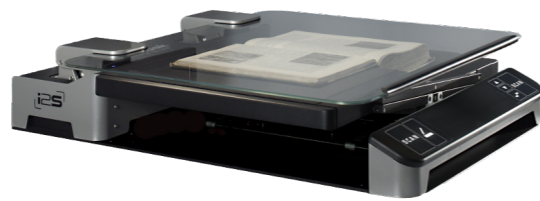
Secure pressure adjustment system

→ Document preservation

Book thickness and weight: up to 20 cm thick without glass and up to 10 Kg

→ Adapted to various document types

##### PROFESSIONAL BOOK CRADLE



Semi-automatic glass and motorized independent trays

→ Fast, effortless scanning

#### HIGH LEVEL OF PRODUCTIVITY AND ERGONOMICS

Scan time: <1s at 400 dpi

Cycle time: <3s at 400 dpi

→ Unequaled productivity

Real-time preview

Automatic calibration

→ Saves time at every stage of digitization

#### SCAN FORMAT

A2: Up to 632 x 449 (mm) / (24.88" x 17.68")  
with glass

A2+: Up to 723 x 512 (mm) / (28.46" x 20.16")  
without book cradle

#### THE HIGHEST LEVEL OF IMAGE QUALITY

9 cm depth of field

→ Extended sharpness to capture every detail

3 cameras available

→ Configurations to suit every need



CopiBook OS A2 is compatible with the following standards ISO 19264-1/B, Metamorfoze Light and FADGI 3\* (EAGLE and ROCK cameras).



##### E-HRIS CAMERA

400 dpi standard  
71 Mpixels



##### EAGLE CAMERA

High resolution 400 dpi  
71 Mpixels  
BoostPic



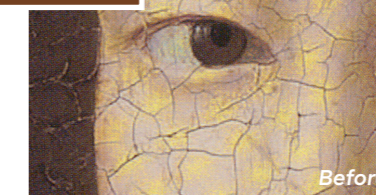
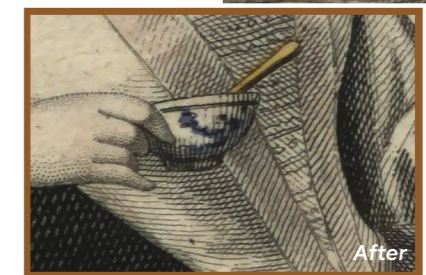
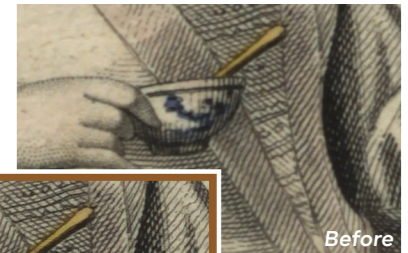
##### ROCK CAMERA

600 dpi  
156 Mpixels  
BoostPic and TrueColor™

#### BoostPic

Make the finest details

Better sharpness / Lower-noise / Higher-contrast



#### TRUE COLOR

True to life color digitization

No moiré pattern

→ Meets the requirements of standards

#### OPTIMIZED LIGHTING SYSTEM

Light diffuser

→ No dazzling light for operators

LED lighting without UV and IR emissions

→ Document preservation

# TECHNICAL SPECIFICATIONS

## CopiBook Open system A2+



<b>Type</b>	A2+ format planetary book scanner
<b>Camera</b>	Eagle or E-HRIS with 71 MPixels matrix sensor, And Rock camera with 156 Mpixels Autofocus No mechanical shutter Color, Grayscale, Black & White
<b>Optical resolution</b>	400x400 dpi, 600x600 dpi Up to 1000 dpi maximum resolution
<b>Scan time</b>	<1 sec at 400 dpi in color < 3 sec at 600 dpi in color
<b>Cycle time</b>	<3 sec at 400 dpi in color < 8 sec at 600 dpi in color
<b>File formats</b>	TIFF, TIFF (multipage), JPEG, JPEG2000, BMP, PDF (multipage), PDF, PNG, DNG
<b>Software</b>	Limb Capture software operated with Windows 10, 11.
<b>Dimensions (L x l x h)</b>	Scanner with book cradle (BC) : 1002 mm x 740 mm x 1364 mm
<b>Weight</b>	Scanner : 53 kg
<b>Power requirements</b>	100V - 240V AC, 50/60 Hz
<b>Warranty</b>	1 year on spare parts and software updates (can be extended)



*The scanner is compatible with all digisolution software*

## ABOUT DIGIBOOK



50 international partners

**5000**  
SCANNERS

sold worldwide



+ 10 millions scanned pages per year

**i2S**  
be visionary

28, rue Jean Perrin  
33600 Pessac, France  
[www.i2s.fr](http://www.i2s.fr)