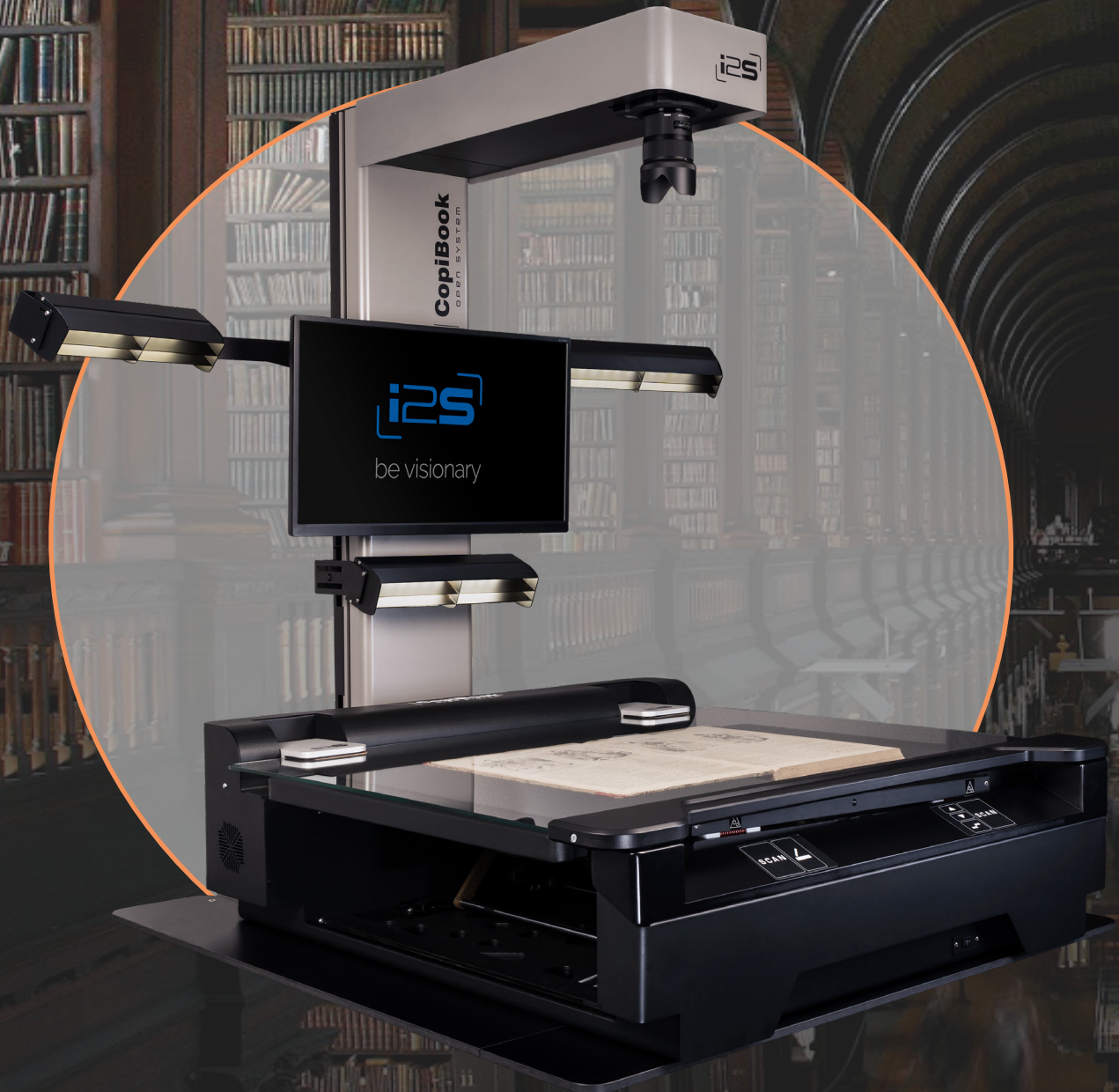


COPIBOOK OS A1+

Combining Large format
and Productivity



EXCELLENCE AT YOUR FINGERTIPS

i2S
be visionary

CopiBook Open System A1+

Combining large format and productivity

SCANNERS WITH MATRIX SENSORS

HIGH LEVEL OF

PRODUCTIVITY AND ERGONOMICS

Scan time: <1s at 300 dpi

Cycle time: <4s at 300 dpi

→ Identical scan times for all formats

Book cradle can be removed

→ Allows the user to scan A1+

Real-time preview

Automatic calibration

→ Saves time at every stage of digitization

SCAN

FORMAT

A1: Up to 844 x 598 (mm) / (33.2" x 23.5") with glass

A1+: Up to 1065 x 754 (mm) / (41.93" x 29.69") without book cradle

AUTOMATIC

BOOK CRADLE

Automatic glass opening and closing

Motorized independent trays

→ Effortless scanning

Secure pressure adjustment system

→ Document preservation

Book thickness and weight: up to 20 cm thick without glass and up to 20 Kg

→ Adapted to various document types



OUTSTANDING IMAGE QUALITY

9 cm depth of field

→ Extended sharpness to capture every detail

2 cameras available

→ Configurations to suit every need



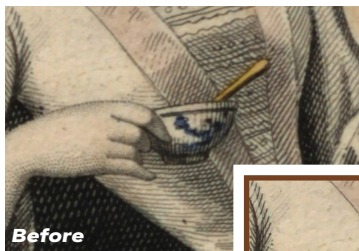
EAGLE CAMERA

High resolution 300 dpi
71 Mpixels
BoostPic



E-EXTRA CAMERA

High resolution 400 dpi
156 Mpixels
BoostPic and TrueColor™



Before
BoostPic

Make the finest details

Better sharpness
Lower-noise
Higher-contrast



Before After

True to life color digitization

No moiré pattern

→ Meets the requirements
of standards



OPTIMIZED LIGHTING SYSTEM

Light diffuser

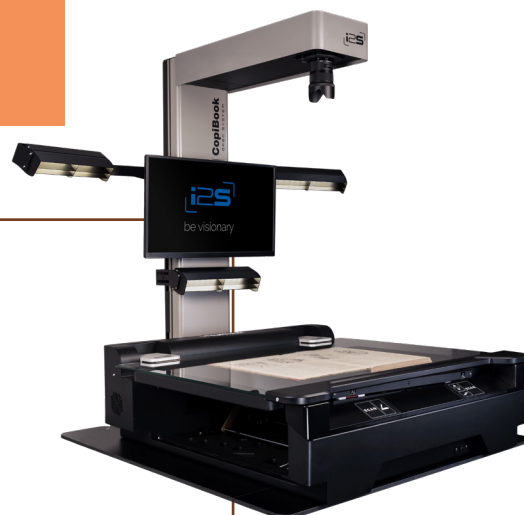
→ No dazzling light for operators

LED lighting without UV and IR emissions

→ Document preservation

TECHNICAL SPECIFICATIONS

CopiBook Open system A1+



Type	A1+ format planetary book scanner
Camera	Eagle with 71 MPixels matrix sensor, And E-xtra camera with 156 Mpixels Autofocus No mechanical shutter Color, Grayscale, Black & White
Optical resolution	300x300 dpi, 400x400 dpi Up to 800 dpi maximum resolution
Scan time	< 1 sec at 300 dpi in color < 4 sec at 400 dpi in color
Cycle time	< 5 sec at 300 dpi in color < 11 sec at 400 dpi in color
File formats	TIFF, TIFF (multipage), JPEG, JPEG2000, BMP, PDF (multipage), PDF, PNG, DNG
Software	Limb Capture software operated with Windows 10, 11.
Dimensions (L x l x h)	Scanner with book cradle (BC) : 1245 mm x 1513 mm x 1405 mm
Weight	Scanner : 80kg
Power requirements	100V - 240V AC, 50/60 Hz
Warranty	1 year on spare parts and software updates (can be extended)



digisolution

From photon to cloud

The scanner is compatible with all digisolution software

ABOUT DIGIBOOK



50 international partners

5000
SCANNERS

sold worldwide



+ 10 millions scanned pages per year

i2S
be visionary

28, rue Jean Perrin
33600 Pessac, France
www.i2s.fr